

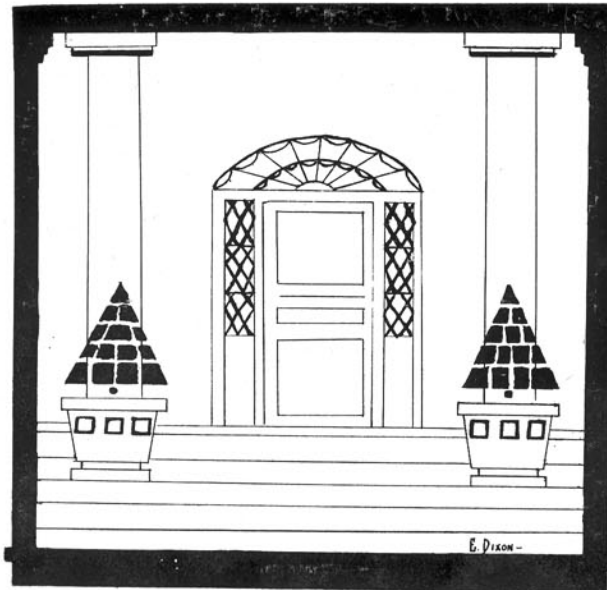
LEPPER P
P. 1925. 01



THE PEPPER POT

1925

VOLUME I



Published by the Senior Class

—of—

ST. MARY'S SEMINARY

ST. MARY'S CITY, MD.



MRS. L. V. MADDOX

— — — — —
DEDICATION
— — — — —

— To —

MRS. L. V. MADDOX

who through twenty-three years
guided the fortunes of old
St. Mary's, this vol-
ume is respect-
fully dedi-
cated.



Pepper Pot Board

Editor-in-Chief
KATHERINE D. HEARNE

Asst. Editor-in-Chief
FLORENCE HARTGE

Art Editor
VIRGINIA REEVES

Sports Editor
JOYCE ADREON

Business Manager
ELIZABETH EBERT

Photographer
HARRIET GRAVES

Literary Editor
KATHRYN ALBAUGH

Asst. Art Editor
ELIZABETH DIXON

Humorous Editor
ELIZABETH CHIPMAN

Circulation Manager
HAZEL BARNESLEY

Typist
ROSALIE JONES

Sponsor
MISS LEIGHLEY

Preface



O you believe in hobbies? We hope so for this book is the result of a hobby. 'Way back there in '21 we began to wish that when we graduated we could leave behind us a living monument of our love for our Alma Mater. Knowing the value of an annual in telling the outside world of school life we finally decided to start what we hope will become a custom, the PEPPER POT.

The work has not been accomplished without difficulties, for most of the staff were entirely inexperienced and we know our product is not without mistakes, but we send it out with the hope that you will receive it in the spirit in which we give it.

We, who are about to depart leave with you the PEPPER POT—a monument to '25.

Historical Sketch



1634—a staunch little band of men and women set out to brave the dangers of an unknown world—the first settlers of Maryland.

1839—a grateful state legislature, to perpetuate the memory of these first settlers, established a refuge from the ignorance so common among women of that day. Thus began St. Mary's Seminary, a living monument to the birth of the state "where the mothers of future generations may receive their education at a place so well calculated to inspire affection and attachment for their native state."

Through the years St. Mary's Seminary has done just this: she has preserved and transmitted to her daughters Maryland's noble ideals and traditions. Rapidly she grew and well she responded to the demands of the times in training women to take their proper places in the world.

In January, 1924, tragedy visited old St. Mary's. The fire demon swooped down and razed our beautiful old building. And then it was that St. Mary's proved herself. Through the splendid work of Miss France and the trustees, school reopened in less than a month and every girl returned. Can one ask more proof of our loyalty and devotion to our Alma Mater?

The opening of the fall term found us still in the "barracks" but with the new building going up rapidly and the prospect of occupying it by March first.

Thus the new and greater St. Mary's rises from the ashes of the old; newer and greater, because it is built on the foundation of the indomitable spirit of love and loyalty of her daughters.



ST. MARY'S

The Castle of Youthful Dreams.

It stands on the brow of a hill,
Looking out where the blue water gleams,
Stately and white and still—
A castle of youthful dreams.

White in the sun's bright rays,
But whiter when moon light beams,
Enchanting the eye and the heart—
This castle of youthful dreams.

And at night with soft darkness about,
When light from the window streams,
Ah! then indeed it intrigues,
This castle of youthful dreams.

With faces eager and bright,
All over, the building teems,
A pageant of youth day and night,
In this castle of youthful dreams.

Eyes looking up to the stars;
Hands stretched to grasp them, it seems,
Minds quick to urge, feet to climb,
In this castle of youthful dreams.

Together here dwell Hope and Faith,—
Unfathomed the world's murky streams,
Sensed not life's distress and despair,
In this castle of youthful dreams.

Live on in your trust, lovely youth,
In the sun and the moon's radiant beams;
Guarded safe from the world's evil wiles
In your castle of youthful dreams!

M. A. FRANCE.

Faculty

MISS M. ADELE FRANCE, A.B., A.M.
Principal

MRS. M. BRAND STROBEL
History—Physics

MISS IDA DELOACHE
English—French

MISS ELIZABETH O'BRIEN, B. M.
Music

MISS HELEN LIEGHLEY, A. B.
Latin—Mathematics

MISS MARGARET CLEWELL
Household Arts—Science

MISS MATTIE RODGERS, A. B.
Commercial

MISS ELSIE V. STANLEY
Physical Education

Board of Trustees

President
CHARLES S. GRASON

Secretary
GEO. L. BUCKLER

Treasurer
STEPHEN M. JONES

J. Marshall Dent

Arthur C. Combs

B. Harris Camalier

Samuel Hayden

Stephen M. Jones

Stephen T. Foxwell

Alfred G. Sanner

Harry G. Garner

C. Benedict Greenwell

Allen Coad

Charles S. Grason

Laurence P. Williams

George L. Buckler

T. Raymond Dixon

Henry C. Dent

If

(With apologies to Kipling)

If you can get up early in the morning
And keep a smiling face at breakfast too;
If you can always give respect that's due them
Those who are given power over you;
If you can always give a patient answer,
Tho' sharp retorts spring to the tongue unbidden,
Or, scorning some mistake made by another,
Somehow contrive to keep it hidden.

If you can take the cruelest blows of fortune
And grin, and keep on going just the same,
If you can face defeat that's almost certain
And give the best that's in you to the game;
If you can play your hardest tho' you're losing,
Nor stop to count the cost when once you're thru,
And hear them criticize yet go on trying,
And rate each criticism what it's due.

If you can boost some cause which takes your fancy
And fight its battles to the bitter end;
If you can bravely overcome disaster
And still call him who caused it—friend;
If you can play and yet not slave for pleasure,
If you can study yet not be a grind,
If you can give each thing its proper measure
And gain well balanced body, soul and mind;

If you can stick to principles of honor,
And hold ideals tho they be laughed to scorn,
If you can bear a bitter disappointment
And rise with joy to meet the coming morn;
If you can rise to meet a situation
Which chills you to the very bone with fear;
You will succeed—and what is more important,
You'll be a worthy daughter of St. Mary's—dear.



To Miss France



We find it hard to bid you farewell. There are so many things we would like to say and cannot.

If we could find words we would say just how much we value the kind counsel with which you have helped us over the last year. We would tell you how we appreciate the great thing you have done for our Alma Mater in helping her over the most trying period of her existence—how we admire your marvelous executive ability and *you*.

Since we cannot do any of these we say in closing that as principal we give you honor, as executive—respect, as sponsor—thanks, and as friend—the love of '25.





ELEANOR VIRGINIA REEVES

Δ Φ Σ

Chapico, Md.

Class treasurer (3); Social Club (3-4); Kings Daughters Committee (3); Class President (4); Student Council (4); Art Editor "Pepper Pot" (4); President Current Events (3); Athletic Association (3-4).

"Gin" "Ginny"

"A daughter of the gods, divinely tall and most divinely fair."



EXT! Why look who's here, Ginny Reeves, President of '25. Now who'd ever have thought that shy little girl who entered back in '21 would come to this? You never can tell what's going to happen nowadays.

Ginny is one of those rare specimens who combine beauty and brains and she has both in large measure. Like Helen of Troy her blonde stateliness has affected more than one masculine heart and yet she can come to math class and tell you things you didn't dream were in the book.

Good luck to you Ginny ol'dear, may you be as successful in life as in school.



SUE JOYCE ADREON

Δ Φ Σ

Baltimore, Md.

Dramatic Club (3); Social Club (3-4); Glee Club (3-4); Athletic Association (3-4); Fine Arts Club (4); Athletic Editor "Pepper Pot" (4).

"Puck in Petticoats."

GENTLE readers, allow us to introduce to you the wit and humor of the senior class—Joyce Adreon. Two years ago Joyce wandered away from Baltimore and, much to our enjoyment, stopped at S. M. S. How glad we are that she did for we just can't picture the class without her merry laugh and the mischievous twinkle in her eye. Joyce's innocent ways and attractive countenance won for her the hearts of the girls and made many masculine eyes turn from their duties at Leonard Hall. Joyce's chief ambition is to have a home of her own and we feel sure that no matter who he is he'll be a very lucky man. So here's to you, Joyce.



KATHRYN WICKERT ALBAUGH

Δ Φ Σ

Hanover, Pa.

Class Treasurer (2-3-4); Social Club (3-4); Glee Club (1-2-3-4); Sec. Social Club (3-4); Sec. Fine Arts Club (4); Editor-in-chief of Seminary Signal (4); Literary Editor of "Pepper Pot" (4); History Prize (3).

*"She's pretty to walk with,
Witty to talk with,
And mighty sweet to think on."*

"Kitty"

THE pride and joy of the Senior class—our pretty witty Kitty. Four years ago this blonde lass came to us from Pennsylvania and we're surely glad she did for what would we ever do without her? She is not only pretty but mighty useful as well, for there is nothing Kitty cannot do.

She says she is going to be a Home Economics teacher but if we told all we know—well!!! you may be sure there is a man in the case though, for she certainly is not "Lack"ing suitors.

Au revoir, Kitty; may fondest hopes be realized.

Maided
Brooklyn
Johns
(7 allies)



HAZEL MAHASKA BARNSLEY
Δ Φ Σ
Rockville, Md.

President Student Council (4); Student Council (3); Vice President of class (2-3); Glee Club (3-4); Current Events Club (3); Social Club (4); Fine Arts Club (4).

*"None know thee but to love thee;
None name thee but to praise."
"Haze"*

JUST as nature was taking on her gorgeous array of colors Haze first opened her eyes and passed her early childhood and the grammar grades in the environs of our famous matrimonial stronghold—Rockville.

We congratulate Rockville on the handsome girl she has sent us and also ourselves on having her in our group, for her charming manner has won the admiration of all and her ability for leadership has expressed itself in her being elected president of the Student Council.

To be or not to be—a nurse—that is the question. We know Haze would make a wonderful nurse, but somehow we feel she will never be one for the pressure from Leonard Hall might become too strong. But we wish her the best of luck and success in which ever she may choose.



ELIZABETH LOUISE CHIPMAN
Δ Φ Σ

Washington, D. C.

Current Events Club (3); Social Club (3); French Club (4); Fine Arts Club (4); Dramatic Club (4); Humorous Editor "Pepper Pot" (4).

"Variety is the spice of life."

"Chippie"

CHIPPIE, come here," was the cry on all sides last year when this fair lady from Washington cast her lot with us; and we all saw one of the most stunning girls that had ever come to S. M. S. She arrived swinging a walking stick and looking like the latest word from Paris, and before long every place you happened in Chippie was leading the fun.

She says that her highest ambition is to be a farmer's wife and raise chickens and when we see those mysterious "grey" envelopes with a decidedly masculine script we all look wise and say nothing.

Best of luck, Chippie, and may all your dreams be realized.



ELIZABETH MAE DIXON

Δ Φ Σ

Oakland, Md.

Glee Club (3-4); Dramatic Club (3-4); Fine Arts Club (4); Athletic Association (3-4); Latin Club (3); French Club (4); Assistant Art Editor "Pepper Pot" (4).

"Music, ho! Music such as charm-eth sleep."

"Dickie"

HERE she is; Paderewski (na) second, the girl who can soothe you with lullabies or break you into pieces with jazz. Dickie joined us only last year but our only regret is that she didn't come sooner and we're glad we're leaving too for S. M. S. wouldn't be the same without her. She declares she's going to be an old maid but we can't see it that way for we know at least one red-haired boy in Richmond whose chief ambition is "to keep a certain girl in S. M. S. from being an old maid music teacher." 'Nuff said!

Well, Dickie, ol' girl, here's wishing you all sorts of luck.



CARA ELIZABETH EBERT

Δ Φ Σ

Parkersburg, W. Va.

Business Manager "Pepper Pot" (4); Business Manager Signal (3-4); President Sophomore Class; Student Council (3); Kings Daughters Committee (3); Bachelor Girls Club (4); Current Events Club (3-4); Social Club (3); French Club (4).

"Here iomes fair Portia's prototype."

"Betty"

FAIR Elizabeth, more commonly called Betty, entered our class three years ago.

Betty has never, so far as we can remember been able to get to class on time, but she usually manages to arrive soon enough to lead the discussions for she has high hopes of becoming a great politician some day. You may be sure if she chooses this career she will succeed for when Betty makes up her mind——!

Like Shakespeare's heroine she is extremely clever and many times have we poor unfortunate Democrats experienced her gentle (?) sarcasm. However we bear no grudge and some day hope to see Betty on the Supreme Bench.



HARRIET MCGINLEY GRAVES
Laurel Grove, Md.

Social Club (3); Athletic Association (3-4); Dramatic Club (4); French Club (4); Senior Reporter; "Seminary Signal" (4); Photographer "Pepper Pot" (4).

"Polly" "Mouse"

"If silence were music she'd be a Jazz band."

POLLY came to us fresh from the fields of St. Mary's; like a shy little mouse she crept in among us—but it didn't take "Mouse" long to learn: she soon made for herself a nest in the hearts of all her classmates.

Although she is probably the least heard from in our class, she is not the least heard of, for if you want anything done get Polly to do it. Harriet is a real good sport; tho' she doesn't star in athletics she always "plays the game."

Some day we will hear of Polly as a kindergarten teacher and we hope all her enterprises will be successful



FLORENCE VIRGINIA HARTGE
Δ Φ Ε
Galesville, Md.

Assistant Editor-in-chief of "Pepper Pot" (4); Assistant Editor of "Seminary Signal" (3-4); Dramatic Club (3-4); Glee Club (3-4); Current Events Club (3-4).

*"True, ah, true and overtrue,
That is why we love her."*

"Hartge"

WELL, well, well, what's the joke now? Whatever it is you may be sure Hartge won't see it. Now that you've been introduced to our literal one we'll tell you some nice things about her.

She is the modest possessor of a brilliant mind but studying isn't all she does for she is mighty good in athletics, too.

We had thought that she would be a Physical Ed. teacher but now we expect to hear of her as the discoverer of something scientific that will revolutionize modern life, or the author of some brilliant book which will be a great influence for good.

Best of luck Hartge. Remember '25 is backing you.



KATHERINE DICKY HEARNE

Δ Φ Σ

Hebron, Md.

Editor-in-chief of "Pepper Pot"; "Seminary Signal" Staff; President of French Club (4); Dramatic Club (3-4); Fine Arts Club (4).

"The uncertain glory of an April Day."

"Kitty"



ATTENTION! Please gaze long and earnestly at this illustrious maiden who hails from the "Eastern Sho". Kitty has been with us only two years, but during that time has proved her supremacy. As a proof of her ability she was elected Editor-in-Chief of the Pepper Pot and has been most capable. Like most of us she declares she is going to be a bachelor girl but I'm sure you will agree with us that some day a dashing young Lochinvar will storm the citadel of her heart and capture this precious jewel. So here's wishing Kitty all the success in the world!



FLORENCE ROSALIE JONES

Hollywood, Md.

Social Club (3); Current Events Club (3); Fine Arts Club (4); Dramatic Club (4); Circulation Manager of "Seminary Signal" (4); Typist of "Pepper Pot" (4); Glee Club (4).

"A violet by a mossy stone, half hidden from the eye."



IT'S hard to introduce Rosalie for we can tell you so little of the real girl. You see she's very modest and we never know just exactly what she can do. It's surprising how many things we've discovered tho'.

Rosalie has one distinction. She's the only member of '25 who has never had a nickname. Goodness knows how she escaped.

She comes from the home of all good little movie stars (almost) but one thing's certain she'll never be one. Some Prince Charming will surely carry her off to a cozy little home of her own 'cause she's just that kind of a girl. Fare thee well, Rosalie, darlin'. We all wish you happiness.



Junior Class

PHYLLIS HAMILTON
President

VIRGINIA MAGUIRE
Secretary

ELIZA RUSSELL
Treasurer

Class Motto
B²

Class Flower
Daisy

Class Colors
White and Gold

Bean, Margaret
Birch, Louise
Blackistone, Jane
Gibson, Jean
Hamilton, Phyllis
Hill, Helen
King, Mary

Turner, Frances

Klobusicky, Ella
Maguire, Virginia
McCollister, Lillian
Palmer, Rachel
Parran, Rachel
Russell, Elisa
Thomas, Vivian



Sophomore Class

ELIZABETH RICHARDSON
President

ADELLE LYNCH
Vice-President

LILLIA PALMER
Secretary

ANN BOND
Treasurer

Class Motto
Never give up

Class Flower
American Beauty

Class Colors
Old rose and silver

Buckler, Elizabeth
Clark, Margaret
Colton, Ophelia
Crusoe, Dorothy Ann
Garner, Cecelia
Gerek, Anna
Gibson, Elizabeth
Gough, Catherine
Gresko, Susie
Hammett, Mary

Horak, Jennie
Johnson, Elizabeth
Lane, Mary Blair
Lore, Sadie
Peverley, Corinne
Roberson, Frances
Smith, Hilda
Unkle, Alice
Wallace, Nellie



Freshman Class

FLORENCE STERLING
President

OLIVE HAMMETT
Vice-President

MILDRED COROSH
Secretary

DOROTHY HARRISON
Treasurer

Class Flower
Forget-me-not

Class Motto
"One for all, and all
for one"

Class Colors
Blue and Silver

Baroniak, George
Burch, Virginia
Cashell, Hal
Chipman, Katherine
Combs, Christine
Dent, Mary T.
Gresko, Andrew

Hewitt, Alberta
Hodges, Mary A.
Jones, Stella M.
Park, Marceline
Smith, Ann
Turville, Dorothy
Zedieck, Anna

Class History



O you like Fairy Stories? If you do just turn the page 'cause this is the honest to goodness truth about the class of '25. If there's strength in numbers Hercules himself couldn't have beaten us that first year 'cause there were twenty-four. It's fair to say that we're the most misunderstood class on record and it began clear back in nineteen twenty-one. The old girls and teachers just couldn't understand that it was absolutely necessary for the development of our young lungs to raise a row in the halls and after light bell. And the demerits we got! They rolled in by the hundreds and we perspired all the greenness off in penance classes until these were abolished after protests by neighboring farmers that it was too hard on their turnip patches. All work and no play may make Jack a dull boy but all play and no work makes Jill just as dull a girl. But when exams came we managed to wade through.

When finally we emerged Sophomores—Oh how important we did feel! This year we really decided to work. Many had fallen by the wayside but fifteen still hung on. April Fool's Day was surely our high spot, for then, locking the faculty in their rooms, we fled to greener fields. This year, classes in school were organized for the first time. Steelie was our first president and Miss Nell Powell was sponsor. As usual we were misunderstood, this time by the Juniors and Miss Ball.

Nineteen twenty-three with its change of principals brought us six new members, five of whom are still with us. Bobbie was our president and Miss Stanley sponsor. And we surely did smash everything from chandeliers to records. In our first basketball practice we broke one to bits and in all the games after that we broke the other. We have also to our credit the first Junior and Senior Prom. In spite of the handicap caused by the fire we labored on and only two left our ranks. On field day a few of our members were out of commission so we didn't just exactly star. When July first finally rolled around we found ourselves full fledged Seniors and settled down and took a long breath.

Now we've come to the conclusion that that was April Fool's Day for us because ever since October seventh we've been chasing ourselves to death to keep up with our work. Oh how it was piled up! We've all gotten thin from work and worry. (Now don't you wish you were in our shoes?) The Pepper Pot is our big project and if it takes pep to put it through it will go with a whiz, 'cause "Pep! More Pep!" is our motto and we live up to it every instant. We started things going this year by

Class History

giving a bazaar just before Christmas and like everything else we do it went through with a bang. Now '25 is drawing to a close and as we leave our Alma Mater looking back over the four happy years spent here we realize that St. Mary's has stamped herself indelibly on our hearts and that no matter where or when we think of her our thoughts will be of love and loyalty.

“For we'll ne'er forget thee,
Place of memories so sweet,
And we'll smile a greeting
Every time we meet.
St. Mary's, dear old St. Mary's!
May she many glories see,
St. Mary's, dear old St. Mary's!
Ever true we'll be!”

Hazel Barnsley.

Class Poem

Four years ago when we began to wend
Our unknown way, Time whispered soft—
“See where the pathway, slowly mounting meets aloft—
The dim goal of dreams! There your course will end.”
Oh dear St. Mary's, our thanks receive; not lore —
Of mighty books alone we prize, but even more
The high ideals your standards helped to raise,
The dear traditions drawn from out your store.

The music master strives to train
His willing scholar in superb technique
That bids the still soul of music speak
And wakes her secrets in sublimest strain.
Gone from her Master and building even higher hope,
Will she know the secret with which she must cope?
Has she learned what creates wretched sorrows?
And, again, what creates the loved success of tomorrows?
Now we have done,—must leave our beloved Alma Mater,
Who stands and watches us go out, our gifts must employ
To tread the Future's unknown path with joy.

Elizabeth Dixon.

Class Prophecy

Paris, France
May 1, 1932.

Dear Jean,

Knowing that you are very interested in radio I want to tell you about the extraordinary program I got the other evening. I was sitting in my salon listening to the usual type of radio program when the announcer said something which startled me:

STATION X Y Z BROADCASTING

Miss Joyce Adreon, head of the department of Home Economics of Drexel Institute, will give the second of her series of lectures on "The Care of the Home and Feeding the Family"—— Scratch, scratch, and I had to try another station.

STATION W E A R

Governor Hazel Barnsley will now give her inaugural address. She was the first governor of New York to be elected by a unanimous vote——

This excited me so much that I lost the station.

STATION P D Q

Miss Elizabeth Chipman will tell of her marvelous invention of a perfect incubator which is guaranteed to hatch every egg. Here more static intervened so I tried my luck again.

STATION B V D

We want to announce that Miss Elizabeth Dixon, Coles Phillip's beautiful model, has had her glorious hair insured for \$100,000. Static interrupts.

STATION B B D

Betty Ebert, Flo Ziegfeld's star, will tell of her numerous love affairs. She is acknowledged queen of the ballet as well as of the heart——

A wireless is being transmitted so I'll try another station.

STATION C O D

Mrs. Harriet Graves MacFadden, who is known all over the world for her beautiful form, and also as an authority on reducing, will now tell us of her methods.

Several stations chime in so I try S O L.

STATION S O L

Mrs. Florence Hartge, famous divorcee and author of the sensational work on Marriage, will lecture on "Ways of Ensnaring Men." I lost the station immediately.

STATION P O P

Miss Kathryn D. Hearne, matron of the City Orphans Home, will give a series of lectures on "The Care and Discipline of Children." Static intervenes.

STATION O W L

Madame Rosalena Jonesisky, the song bird of the South, will now sing a number of plantation songs.

Very much interested, I tried to amplify the sound and instead got S O S.

STATION S O S

Miss Gin Reeves, the celebrated humorist, will tell us a story entitled "One April Fool's Day."

I was so excited by this time that I decided not to try any other stations. I have been wondering for some time what has happened to the rest of my class and this program set me thinking of those happy days at S. M. S.

Sincerely,
KITTY ALBAUGH.

Senior—

NAME	NICKNAME	MOTTO	PET EXPRESSION
Adreon, Joyce	Sue	"Laugh and the world laughs with you."	"Don't mind me."
Albaugh, Kitty	K.	"On with the dance."	"I know it's so!"
Barnsley, Hazel	Haze	"Eat, drink and be merry."	"Oh, my dear!"
Chipman, Elizabeth	Chippy	"Sing and be happy."	"You're as crazy as you look!"
Dixon, Elizabeth	Dicky	"Music hath charms."	"What's say?"
Ebert, Elizabeth	Betty	"Put something over."	"Doncha know?"
Graves, Harriett	Polly	"The younger the better."	"Oh, it's gonna rain."
Hartge, Florence	Hartge	"Slow but sure."	"You know!"
Hearne, Kitty	Kitty	"Whose slenderbody lodged a mighty mind."	"I wish you'd come on."
Jones, Rosalie	Rosalie	"Silence is golden."	"Oh, my soul."
Reeves, Virginia	Ginny	"Virtue is its own reward."	"Applesauce."

As Others—

Cutest Girl	Joyce Adreon
Best Personality	Kitty Albaugh
Most Attractive	Hazel Barnsley
Most Stunning	Elizabeth Chipman
Most Musical	Elizabeth Dixon
Best Groomed	Betty Ebert

—Statistics

FAVORITE PASTIME	GENERAL IMPRESSION	WISHES TO BE	WILL BE
Walking with "E."	Lazy	Nurse	Wife
Looking at "Fashionable Dress."	Pep	Designer	Somebody's darling
Making excuses to go to Leonardtown.	Good sport	Nurse	Lady of leisure
Begging for food.	Noisy	Teacher	Wife
Strumming on a banjo.	Musical	Paderewski 2nd	Music teacher
Gathering her money.	Bluffing	Society bud	Politician
Communing with nature.	Silent	Teacher	House Wife
Studying.	Studious	Business woman	Wife
Writing.	Brilliant	Ph. D.	Actress
Sleeping.	Quiet	Teacher	Cartoonist's wife
Nothing.	Sweet	Artist	Wealthy clubwoman

—See Us

Daintiest	Polly Graves
Most Ambitious	Florence Hartge
Most Sophisticated	Kitty Hearne
Most Generous	Rosalie Jones
Prettiest	Virginia Reeves



Jokes

Miss Fisher—When you eat here you do not have to dust off your plate.
Miss Stanley—Beg pardon, force of habit—I have been umpiring our baseball games this year.

Old Girl—Do you wish to sit in the back, front, or side of the Commencement Hall?

Freshie—I'd like to sit down, please.

Smitty—I've decided to give up shorthand.

Hartge—No! Why?

Smitty (determined)—I don't intend to have anyone dictate to me.

Frances—Liz, those onions weren't all they might have been.

Liz—That's funny. I even soaked them in Listerine before we ate them.

Jean—Where's the paint remover?

Ginny R.—What do you want it for?

Jean—Eliza wants to wash her face.

Betty—Did that car say Camden?

Dickie—I didn't hear it.

Miss de Loache—Girls are prettier than men.

Kitty—Why, naturally.

Miss de Loache—No! Artificially.

Hartge—Did your watch stop when it hit the door?

Bobbie—Certainly. Did you think it would go on through?

Jokes

Chippie (after mass meeting)—Miss Stanley, have you ever done any public speaking?

Miss Stanley—Yes, I just called Mrs. Wherritt over the phone.

Ginny Mac—I'm almost sure I've run across your face, sometime or other.

Baby Chips—No! It's always been that way.

New Girl (during the period of Betty's cold)—Whom do you look like, Betty?

Betty—My eyes are like Mother's, my nose like Daddy's, and my voice I think I got from our automobile horn.

Mrs. Stroble—What's the opposite of woe?

Freshies (in unison)—Giddap!

Miss de Loache—What part of speech is nose?

Soph.—None. You speak with your mouth.

Chippie—Lend me your glasses.

Frances—Yes, but don't get the panes dirty.

Twister—Heard you were sick. What's the matter?

Joyce—Had what Miss Stanley called the clothing sickness.

Twister—Here now! What do you mean?

Joyce—Had a coat on my tongue, and my breath came in short pants.

Bobbie—Where is your room-mate?

Haze—Well, if the ice is as thick as she thinks it is she is skating. If it is as thin as I think it is she is swimming.

Betty—What are you reading?

Phil—Service.

Betty—Oh! You lucky thing. I wish I had some service.

Miss de Loache—What do you know about "Fielding"?

Kitty G.—Nothing much. I always play pitcher.

Miss Clewell—How many kinds of flowers are there?

Dot Anne—Three, wild, tame and collie.

Miss de Loache (suddenly calling upon Rosalie)—What is a pun?

Rosalie—Upon? A preposition.

Jokes

Helen—What's the matter, Betty?
Betty—Frances has lost her scarf.
Helen—Too bad, but why worry about her things?
Betty—I was wearing it when she lost it.

Mrs. Strobel—Heat expands and cold contracts. Give me an example.
Patty—In summer the days are very long, while in winter they are short.

Ginny Mac—I wish some one would call me up.
Miss Stanley—I'll go upstairs and call you up.
Hartge—Oh! Is there a phone up there?

Kitty A. (talking about songs)—Do you know "Cross Eyed Papa?"
Jean—No, but I know "Gladly My Cross I Bear."

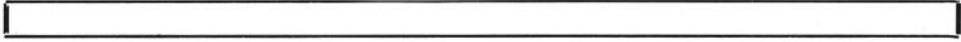
Outsider—Do you have rats in the barracks?
Smarty—No. All the girls have bobbed hair.

Kitty—Do you like codfish balls?
Joyce—I don't know. I've never been to one.

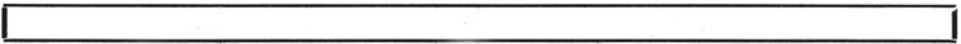
Ginny—Oh! We're going to cook welch rarebit today.
Dumb Freshie—Gee! Where are you going to catch the rabbit?

Miss France—I think we should call the new gymnasium Stanley Hall.
Miss O'Brien—Why not call it Gym (Jim) Hall?





ATHLETICS



Teams

GOLD

HILDA SMITH
Captain

SADIE LORE
Assistant Captain

Adreon, Joyce
Albaugh, Kitty
Buckler, Elizabeth
Bond, Ann
Crusoe, Dorothy Anne
Combs, Christine
Dixon, Elizabeth
Garner, Cecelia
Gibson, Elizabeth
Gough, Kitty
Hammett, Mary
Hearne, Kitty
Horak, Jennie
Jones, Rosalie
Klobusicky, Ella
Lane, Mary Blair
Lynch, Adelle
Palmer, Lillia
Palmer, Rachel
Peeverley, Corinne
Roberson, Frances
Thomas, Vivian
Turner, Frances
Wallace, Nellie
Graves, Harriette
McCollister, Lillian
Johnson, Elizabeth
Hamilton, Phyllis
Hodges, Mary Ann
Hill, Helen
Hartge, Florence

BLACK

JANE BLACKSTONE
Captain

HAZEL BARNSLEY
Assistant Captain

Baroniak, George
Bean, Margaret
Birch, Louise
Burch, Virginia
Cashell, Hal
Chipman, Elizabeth
Chipman, Katherine
Clark, Margaret
Colton, Ophelia
Corosh, Mildred
Dent, Mary T.
Ebert, Elizabeth
Gerek, Anna
Gresko, Andrew
Gresko, Susie
Gibson, Jean
Hammett, Olive
Harrison, Dorothy
Jones, Stella
King, Mary
Maguire, Virginia
Park, Marceline
Reeves, Virginia
Russel, Eliza
Sterling, Florence
Smith, Ann
Turville, Dorothy
Zedek, Ann
Uncle, Alice

Yells

Horn and hoof!
Horn and hoof!
Lower the floor and
Raise the roof,
Razzle dazzle,
Zizzle, zip!
Go 'er—Seminary
Let 'er rip
Yea—Seminary!

We're out for gore
We're out for gore
Breathe it low
Breathe it low
Let's go—Seminary!



St Mary's Daughters

Behold us, gracious Savior,
In girlhood's morning bright.
Look on us in Thy mercy
And guide us with Thy light.
Life's journey lies before us,
Go with us all the way,
So shall we love Thee truly
And serve Thee day by day.

Those gathered here together
Will soon be far apart,
But in Thy love and service
Unite us heart to heart,
And keep us pure and loyal
Where e'er our lot may be,
Thy daughters of St. Mary's,
And true, Our God, to Thee.

So when Thou com'st in glory
To gather in Thine own,
And we shall stand for judgment
Before the great white Throne,
Then place us at Thy right hand
And harken to our prayer;
Of all St. Mary's daughters
Let none be missing there.

Dear Old St. Mary's

(To the tune of "Juanita")

Dear old St. Mary's, we will sing her praise today,
Each one is loyal, from her ne'er we'll stray.
But we'll still go onward, as no steps do we retrace.
Fondest be the memories, of this dear old place.
St. Mary's! dear old St. Mary's! May she many glories see!
St. Mary's! dear old St. Mary's! Ever true we'll be!

Tho' after school many dearest ties may end,
Far from St. Mary's, our lives we'll spend.
But we'll ne'er forget thee, place of memories so sweet,
And we'll smile a welcome, every time we meet.
St. Mary's! dear old St. Mary's! May she many glories see!
St. Mary's! dear old St. Mary's! Ever true we'll be!



(To the tune of "What'll I do?")

Here's to the team
Whose steam we all admire,
Whose pep and go we praise.
We know you're true
To all ideals of school,
And thus our voices raise.
Tho' we may win,
We know that you will fight
Until the very end.
And if you win,
We'll cheer with all our might
And still call you our friend.



ORGANIZATIONS

Le Cercle Francais

President

KITTY HEARNE

Secretary

PATTY WISE DENT

Treasurer

ELIZABETH CHIPMAN

Sponsor

MISS DE LOACHE

Louise Birch
Jane Blackistone
Elizabeth Dixon
Elizabeth Ebert
Harriette Graves
Phyllis Hamilton
Eliza Russell

Katherine Hearne
Helen Hill
Virginia Maguire
Lillian McCollister
Rachel Palmer
Rachel Parran
Francis Turner

Social Club

President

HAZEL BARNSLEY

Secretary

KITTY ALBAUGH

Treasurer

FRANCES TURNER

Sponsor

MISS CLEWELL

Kitty Gough
Elizabeth Johnson
Sadie Lore
Elizabeth Buckler
Cecelia Garner
Hazel Barnsley
Mary Blair Lane
Mary Anne Hodges
Vivian Thomas
Frances Turner
Kitty Albaugh
Alice Unkle
Mary Hammett
Stella Jones
Ella Klobusicky
Nellie Wallace

Ophelia Colton
Dorothy Harrison
Corrinne Peverley
Anne Smith
Elizabeth Gibson
Margaret Messick
Lillian McCollister
Florence Sterling
Virginia Birch
Hal Cashell
Kitty Chipman
Olive Hammett
Anna Garek
Susie Gresko
Frances Roberson
Joyce Adreon

Virgina Reeves

Fine Arts Club

President
HAZEL BARNESLEY

Secretary
KITTY ALBAUGH

Sponsor
MISS DE LOACHE

Jenny Horak
Anna Zidek
Andrew Gresko
Elizabeth Buckler
Mary King
Sadie Lore
Margaret Clark
Anna Garek
Joyce Adreon
Rosalie Jones
Cecelia Garner
Mary Blair Lane
Alice Unkle
Anne Bond
Kitty Hearne
Hilda Smith

Mary T. Dent
Ella Klobusicky
Eliza Russel
Helen Hill
Kitty Chipman
Elizabeth Chipman
Jean Gibson
Lillian McCollister
Harriet Graves
Francis Turner
Margaret Bean
Anne Smith
Christine Coombs
Nelly Wallace
Ophelia Colton
Elizabeth Dixon

Dorothy Harrison

Current Events Club

President
VIRGINIA REEVES

Secretary
HILDA SMITH

Sponsor
MRS. STROBEL

George Baroniak
Mildred Corosh
Dorothy Anne Crusoe
Mary Turner Dent
Elizabeth Ebert
Kitty Gough
Andrew Gresko
Florence Hartge
Mary Anne Hodges
Mary Hammett
Dorothy Turville

Olive Hammett
Stella Jones
Elizabeth Johnson
Adelle Lynch
Margaret Messick
Corrinne Peverley
Lillia Palmer
Frances Roberson
Florence Sterling
Vivian Thomas

Dramatic Club Roll

FLORENCE HARTGE
President

PHYLLIS HAMILTON
Vice-President

JANE BLACKISTONE
Secretary and Treasurer

MISS FRANCE
Sponsor

Anne Bond

Elizabeth Chipman

Margaret Bean

Dorothy Crusoe

Hilda Smith

Adele Lynch

Mildred Corosh

Elizabeth Dixon

Margaret Clark

Marceline Park

Mary T. Dent

Helen Hill

Eliza Russel

Harriet Graves

Rachel Parran

Virginia Maguire

George Baranack

Andrew Gresko

Lillia Palmer

Rachel Palmer

Jean Gibson

Rosalie Jones

Virginia Burch

Christine Coombs

Ophelia Colton

Dorothy Turville

Kitty Hearne

Bachelor Girls' Club

Jane Blackistone

Elizabeth Chipman

Elizabeth Dixon

Elizabeth Ebert

Virginia Reeves

Frances Turner

Alumnae Members

Alice Robinson

Elizabeth Richardson

Sororities

'Twas upon a midnight dreary and the moonlight wan and
eerie
Smote in strange fantastic patterns on the floor.
As I gazed upon the river came a sound that made me
shiver—
Murmur of departed spirit coming thru my chamber door,
Only this and nothing more.

Silently they drew around me in a still and ghostly circle,
Till I found my tongue and asked them in a whisper, nothing
more,
“Pray thee tell me, white robed sisters, who are you and
what’s your mission
That you pay me such a visit, filing thru my chamber door.”
Silence answered as before.

Then there spoke to me the leader in a voice of ghostly
gloom,
Spoke in accents low and solemn as she walked about the
floor,
“We the spirits long departed, ghosts of Epsilons and
Sigmas,
Come to give to you a mission that you’ve never had before,
Tell the outside world about us, of our ideals, of our lore,
Of our prowess”—nothing more.





Delta Phi Sigma Sorority

Active Members

Joyce Adreon
Kitty Albaugh
Hazel Barnsley
Elizabeth Chipman
Kitty Chipman
Elizabeth Dixon
Elizabeth Ebert
Elizabeth Gibson
Phyllis Hamilton

Kitty Hearne
Helen Hill
Mary Anne Hodges
Sadie Lore
Virginia Maguire
Virginia Reeves
Ann Smith
Florence Sterling
Frances Turner

Anne Tolson



Delta Phi Epsilon Sorority

Active Members

Virginia Birch
Jane Blackistone
Anne Bond
Dorothy Ann Crusoe
Mary Turner Dent
Patty Dent
Cecelia Garner
Kitty Gough

Dorothy Harrison
Florence Hartge
Adele Lynch
Lillian McCollister
Lillia Palmer
Rachel Palmer
Rachel Parran
Corinne Peverley

Hilda Smith

Student Council

President
HAZEL BARNSLEY
Secretary
JANE BLACKISTONE

Senior Representatives

V. Reeves
H. Barnsley

Sophomore Representatives

S. Lore
A. Lynch
M. Hammett

Junior Representatives

P. Hamilton
J. Blackistone

Freshman Representatives

F. Sterling
V. Burch
M. T. Dent

Sponsor

MISS FRANCE

Seminary Signal Staff

Editor-in-Chief
KATHRYN ALBAUGH

Assistant Editor-in-Chief
FLORENCE HARTGE

Sports Editor
SADIE LORE

Business Manager
ELIZABETH EBERT

Social Editor
VIRGINIA MAGUIRE

Exchange Editor
KITTY HEARNE

Circulation Manager
ROSALIE JONES

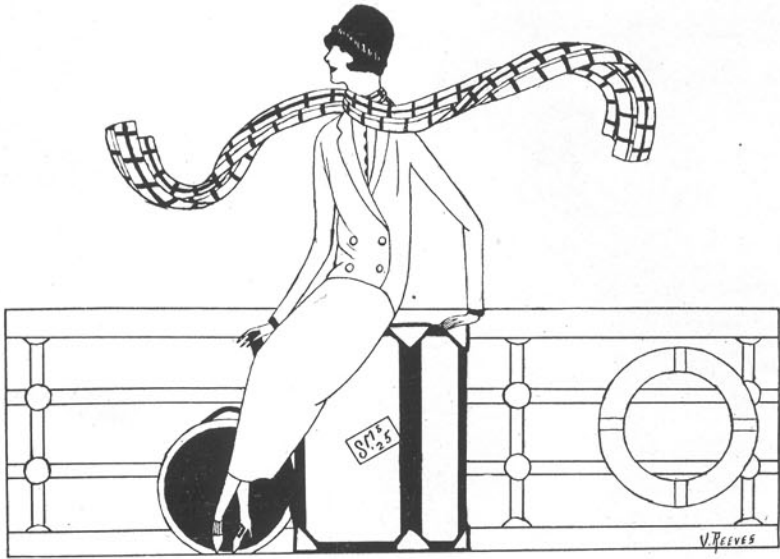
Sponsor
MISS FRANCE

Copy Staff

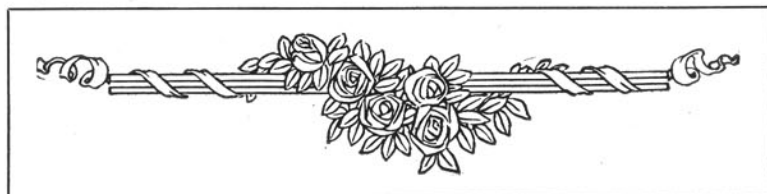
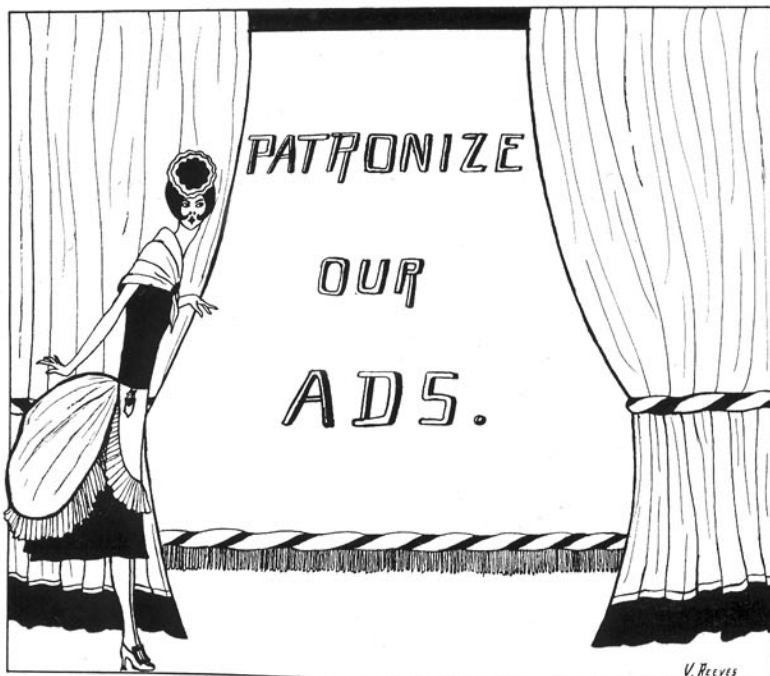
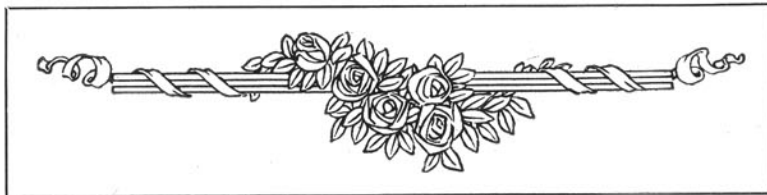
Virginia Reeves
Jean Gibson
Cecelia Garner
Mildred Corosh

Dictionary of Slang

- Commencement*—Freshman's idea of heaven.
- Dip*—Seniors pass to what?
- Chorus*—I howl, you howl, we all howl.
- St. Mary's City*—Try and find it.
- Junior Hall*—Let's all fuss.
- Senior Hall*—H. H. and all the D's.
- Up Stairs Barracks*—Haven of all good girls.
- Phys. Ed.*—Peculiar form of torture for pleasingly plump damsels.
- New Building*—Castle of dreams.
- Joe Cox*—Idol of E. E.; E. C.; J. A.; F. T.
- Leonardtowntown*—Seminary Mecca.
- Dukes*—Filling Station. (Not for cars.)
- Pardon me, please*—Filler for awkward pauses in conversation.
- Pooh*—Expression of highest approval (?).
- A Case*—Excessive amount of devotion between two members of same sex (Feminine).
- Goology*—Nothing less than goo—.
- Goo*—Excessive state of stickiness.
- Pooch de pooch*—Form of expression fashionable among cases.
- Love Letters*—Charlotte Hall!
- Here Now!*—Twister.
- Lovely*—Dot Anne.
- Hot Dogs!*—Perspiring hounds.
- Hazing*—Helping new girls to feel at home.
- Funeral*—That's your funeral, not mine!
- Swearing*—Expressing one's self (not according to Hoyle).
- Ain't he darling?*—Doesn't mean a thing.
- Dash along*—Mrs. Strobell's rate of speed.
- Hush!* ! ! !
- True story*—Things that never happen.
- Exams*—Faculty take unfair advantage.
- Flunk*—Teacher's misunderstanding of student's ability.



— AU REVOIR —



Best Building Materials

AT REASONABLE PRICES

Delivered Direct, Via Our Boat
"Henrietta Frances"

A service which many residents of
St. Mary's County appreciate.

Why not try it on your next order,
whether large or small?

E. S. Adkins & Co.

"EVERYTHING NEEDED FOR
BUILDING"

SALISBURY, MD.

Stephen Lane Folger, Inc.

Established 1892

Manufacturing Jewelers

180 Broadway
New York

Clubs and College Pins and Rings

Gold, Silver and Bronze Medals

BE SURE IT'S

The logo for Carry's Delicious Ice Cream features the word "CARRY'S" in a large, bold, stylized font with a small sailboat icon integrated into the letter 'A'. Below it, the words "Delicious Ice Cream" are written in a smaller, simpler font.

We specialize in serving home trade, so-
cial affairs, weddings, lodge, sorority and
fraternity affairs.

**CARRY ICE CREAM COMPANY
INCORPORATED**

1337 D STREET, S. E.

Lincoln 5900

Washington, D. C.

COMPLIMENTS

of

Z. D. Blackistone

1401 H STREET, N. W.
WASHINGTON, D. C.

COMPLIMENTS

of

Dr. C. N. Chipman

COMPLIMENTS

of

Bachelor Girls Club



ENGRAVING — PRINTING — BINDING

*William E. Read, President.
Charles A. Taylor, Vice-Pres. Harry J. Read, Secy.-Treas.*

The Read-Taylor Company

Price + Quality + Service
Printers and Publishers



Lombard and South Streets
Baltimore

New York
Representative

} GEORGE F. G. BOOSS, Jr.

{ 214 W. 92nd Street
Phone, Riverside 2709

P. B. X.
CALVERT
1800

Remember the Producers of This Publication!



PUBLICATIONS OUR SPECIALTY

ENGRAVING
PRINTING
BINDING



PRICE
QUALITY
SERVICE

*W*e have a department devoted exclusively to work of this nature.

*T*his Publication produced by us.

J. Gale
Ebert Co.

PARKERSBURG, W. VA.



Books Magazines
Stationery

COMPLIMENTS
of

Junior Class

COMPLIMENTS
of

Sophomore Class

COMPLIMENTS
of

Delta Phi Epsilon

COMPLIMENTS
of

Freshman Class

COMPLIMENTS
of

Delta Phi Sigma

COMPLIMENTS
of

Bernard Evander

Autographs

Sue Joyce Adron
Flouca Virginia Hartge
Eleanor Virginia Reeves
Mathewine Sidney Deane
Harriette M^cLinley Graves
Florence Rosalie Jones
Cora Elizabeth Ebert
Kathryn Wickert Albaugh
Elizabeth Louise Plifuman
Kay & Meluska Barnday
Elizabeth Mae Dixon

Autographs

Dorothy May Harrison - Hughesville, Md.

Mary Turner Went - Oakley, Md.

Margaret Ann Smith - Ridgely, Md.

Virginia Ruth Burch - Milestown, Md.

Alberta Hewitt Valley Lee, Md.

Mary Ann Hodges - Davidsonville, Md.

Stella Mae Jones - Neavitt, Md.

Christine Combs - Drayden, Md.

Hal Cashell - Rockville, Md.

Katherine Chapman - Wash. D.C.

Mildred Helen Lavash - 180 Main St. Annapolis, Md.

Marcella Park # 208. W. Franklin St. Balt.

Florence E. Sterling Hotel Sterling Crisfield Md.

Ann Tolson Piney Point, Md.

Cornie Dunham. Peurley. - Indianapolis. Ind.
Mary Blair Lane - Valley Lee Md.
Frances Clarissa Johnson - Cambridge, Md.
Nellie Katherine Wallace, Laurel Grove, Md.
Loretta Adelle Lynch - Madox, Maryland
Elizabeth Carroll Gibson - Harry, Md.
Ann Aphelia Colton - Oakley Md.
Cecilia Ann Ganner. Holly wood, Md.
Dorothy Ann Crusoe - Aquasco, Md.
Margaret Francis Messick. Benedict Md.
Catherine Elizabeth Gough. Leonardtown, Md.
Lillia Dent Palmer Palmerie, Md.
Sassie E. Lane - Salomon's, Md.
Elizabeth V. Buckler Laurel Grove, Md.
Ann Rebecca Bond, Holly wood, Md.

Rachel Norton Parson - Aquasco, Md.
 Rachel Raymond Palmer Abell, Md.
 Jane Smith Blackstone River Springs, Maryland
 Margaret Ottaway Bean Ft. Detmers Md.
 Lillian ^{met} M^{rs} Callister - Price, Maryland.
 Vivian Leona Thomas - St. Georges Island, Md.
 Mary Eliza Russell Maddox, Maryland
 Virginia Maguire Upper Marlboro Md.
 Frances June Norton, Md.
 Jean Gibson, Chaptco, Md.
 Jean French Price, Fayetteville, Md.

when you are old,
and cannot see,
take out your specs
and think of me!
Always,
Emme

Remember me, too, to
remember me. It's all I ask
Love,
C. Legg

A little "country-girl"
wishes to be remembered.
Love,

'27

"Me" Blair

So meet to know to love,
to part -
is the sad sad story
of a school girl's heart
Always
remember
Love
Ann

Will old desk
don't forget when
you are married
to ??? to remember
old Miss
'27 AOE Kelly Goyf